

# Personnel Safety Solution

Protect what matters



Ensure real-time safety for personnel in industrial environments and remote locations.

GuardRFID's **Personnel Safety Solution** allows you to account for your workers in real-time and provide immediate protection in a crisis.



Talk to us about the most advanced personnel visibility and mustering system for your industrial environment.

## Challenges

According to the ILO, a worker dies every 15 seconds from a work-related accident, and 153 more are hurt. That's 317 million accidents on the job annually, with many resulting in extended absences from work. A personnel safety solution is therefore one of the most important safety measures for your high-risk industrial environment. Whether it's operating on a deep-sea oil drilling rig and needing to know where everyone is in the event of a fire, or ensuring that only certain authorized people are in a hazardous area, you need to know where your people are at all times, and that they are out of harm's way.

## Solution

The GuardRFID® Personnel Safety solution delivers an advanced, real-time employee mustering and lone worker monitoring system for industrial workers, includes support for hazardous (EX-rated) or remote environments. The solution is scalable from a simple automated mustering roll-call that identifies tagged personnel as they enter a mustering area, up to a fully-featured system that locates employees on a site map in the event of a distress call or mustering event. The solution includes our small, lightweight wearable RFID tags with user-activated push buttons - this allows employees to be quickly located and to summon help if needed.

## How It Works

Personnel are assigned an active RFID tag with optional call button support - this can be attached to hardhats, worn on a wristband or attached to a lanyard. The solution uses the GuardRFID suite of infrastructure hardware and AllGuard® enterprise software to provide real-time location monitoring, activate alarms and mustering support. If personnel press the call button on their tag, the active RFID tag raises an alarm in the AllGuard software. When the alarm is received in real-time, the software can identify where the worker is and send help to investigate the emergency situation.

**Protect tagged personnel with the most reliable mustering and real-time safety system available.**

Guard RFID Solutions Inc. [sales@guardRFID.com](mailto:sales@guardRFID.com) • 866.785.7343

# Personnel Safety Solution

Protect what matters



## Issues & Challenges

**A WORKER DIES EVERY 15 SECONDS**  
from a work-related accident,  
**AND 153 MORE ARE HURT**

U.S. fire departments  
alone respond to  
**37,000**  
**FIRES**  
at industrial properties  
each year

**317 MILLION ACCIDENTS**  
**OCCUR ANNUALLY ON THE JOB**  
many resulting in extended absences from work

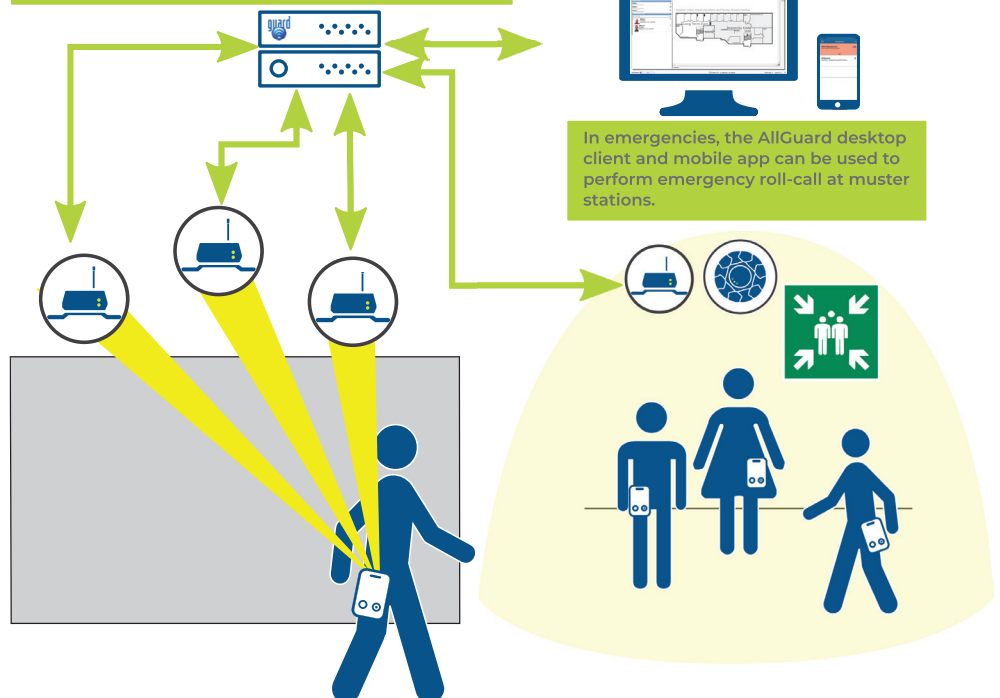
## About GuardRFID

GuardRFID delivers a robust, multi-purpose, real-time location platform that offers superior flexibility, interoperability and performance. With installations around the world, we help organizations achieve the protection, compliance, and efficiencies they require when it comes to what matters most—their people and assets.

## Solution Benefits

- Provide prompt assistance to staff in dangerous environments via a simple button press.
- Improve operational effectiveness by accurately pinpointing personnel in industrial environments, hazardous work zones and emergency evacuations.
- Real-time emergency roll-call at muster stations.
- Enterprise system that can be used to monitor employees in multiple locations and allows employees to easily transfer between facilities.
- Strongest immunity to wireless interference with zero impact on or from Wi-Fi networks, and the reduced risk of missed alarms often associated with infrared and other technologies.
- Integrates with existing systems to ensure your employees' safety is part of your larger facility strategy.
- Tag options include low-profile, simple location monitoring tags, tags with call buttons, and sophisticated Staff tags (-EX rated, two programmable tag buttons, audible response capability and can be configured to generate Man Down alarms).

Tag Readers relay tag information and signal strength to the AllGuard Server which calculates their position and places their current location on a map.



FOR MORE INFORMATION: visit [guardrfid.com](http://guardrfid.com) or call us at 1.866.785.7343